

A Beautiful Blend of Ergonomics & Intelligence

6400 Chair

Forest
DENTALEZ



dhpsupply.com
800.626.2163

6400 CHAIR

1

Emphasis on Ergonomics

Sit or stand: why choose when you can have both? As the highest-rising chair in the industry, it allows for greater patient treatment flexibility, helping more dentists practice without pain.



2

Comfort Meets Care

The adjustable heat and massage provide soothing warmth and relaxation while the plush UltraLeather cushion, optional neck and knee pillows comfort the patient to reduce interruptions.



3

Latest Technology from Head to Toe

Utilizes digital chair position sensors to maintain chair positions reliably. The number one point of failure for chairs are those that use mechanical technology for chair positioning.



4

Aeras Intel, the New Standard in Smart

Be smarter about your practice efficiency, revenue and maintenance with data collected from the only chair in the industry that offers monitoring technology with no extra charge.

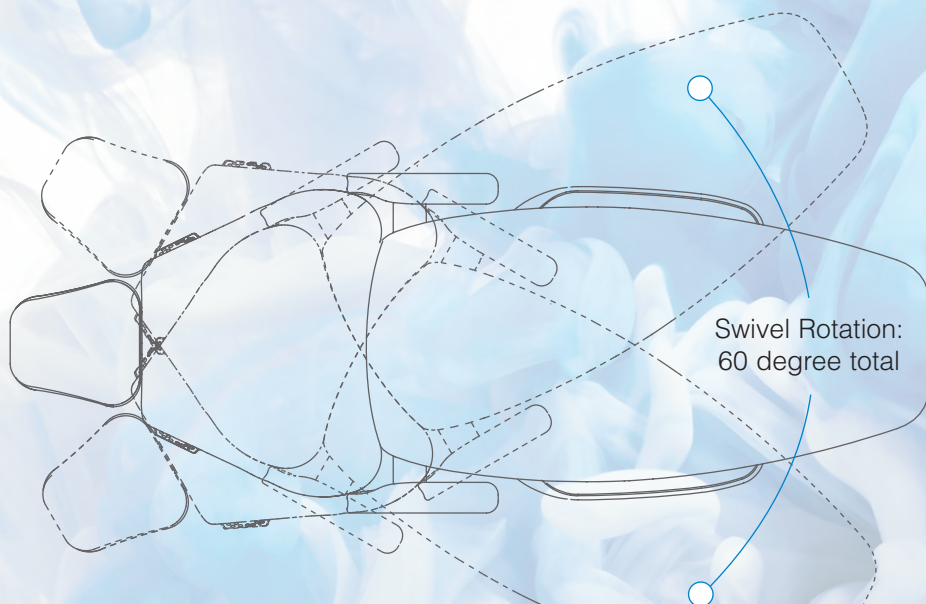


5

Designer-Friendly Colors

Select from unparalleled dual color options for your chair paint and upholstery that can fit seamlessly into your existing office or provide inspiration for your new office design.





Swivel Rotation:
60 degree total

Flexibility Reaches New Heights

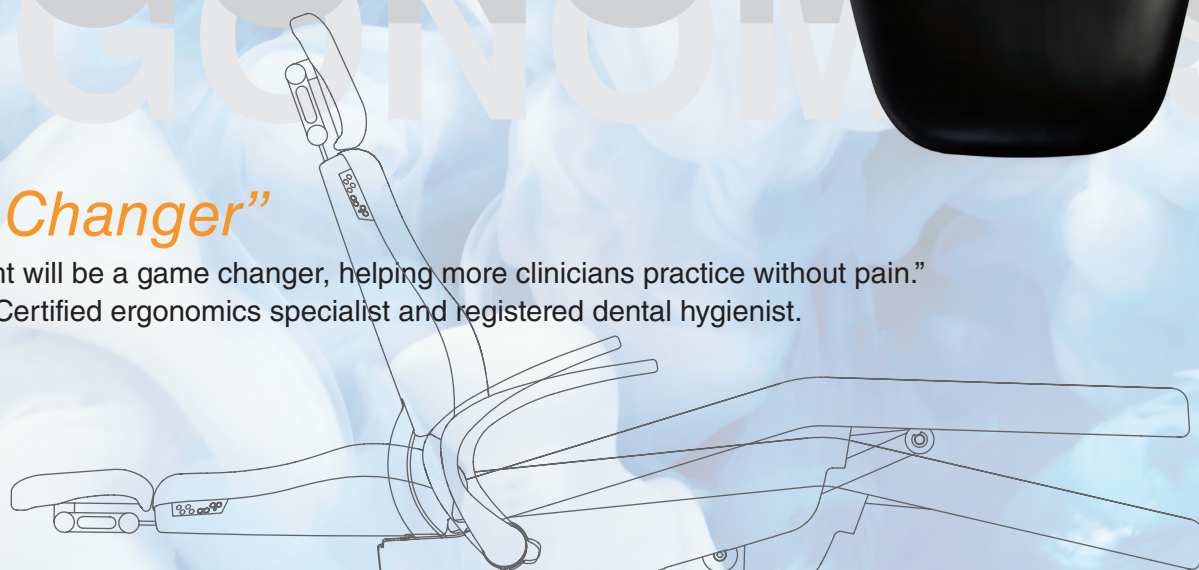


“Game Changer”

“The 36.5” height will be a game changer, helping more clinicians practice without pain.”

Katrina Klein - Certified ergonomics specialist and registered dental hygienist.

Seat Height:
17” - 36.5”



1

Emphasis on ergonomics

2

Comfort meets care

3

Latest technology from head to toe





5

Designer-Friendly colors

4

Aeras Intel, the new standard in smart technology

SURFACE FINISH OPTIONS

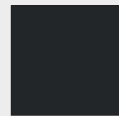
Powder Coat Paint: 9 Colors



Arctic Silver



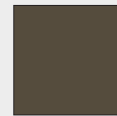
Forest Grey



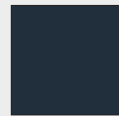
Charcoal



Copper



Bronze



Midnight



Pewter

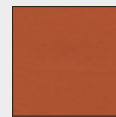


Shadow

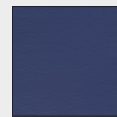


White

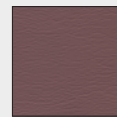
UltraLeather: 12 Classic Colors



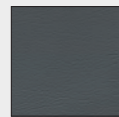
Autumn Leaf



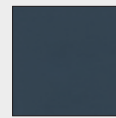
Baltic



Boysenberry



Charcoal



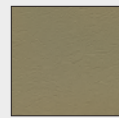
Diplomat Blue



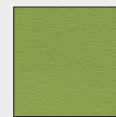
Doe



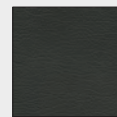
Dove Grey



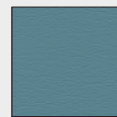
Papyrus



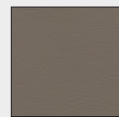
Parrot



Raven Wing

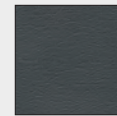


St. John

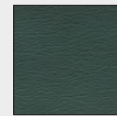


Stone

UltraLeather: 5 Pearlized Colors



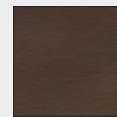
Midnight



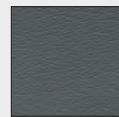
Oz



Pewter

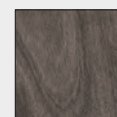


Pharoah



Tin Man

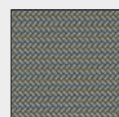
Carbon Fiber: 3 Patterns



Greywood



Laser Leather



Lemans

SPECIFICATIONS

Specification	Description
Seat Height	17" - 36.5"
Upholstery	Seamed or Seamless with or without heat massage
Total Lift Capacity	600 lbs total / 330 lbs patient (when chair mounted delivery unit and light are used)
Lift System	Hydraulic
Headrest	Premium or Standard Dual Articulating, or Magnetic Catchers Mitt
Armrests	Swing down
Swivel/Rotation	30 degree left/right, 60 degree total
Standard Controls	Standard touchpads on both sides of upper backrest
Control Functions	3 auto programs plus auto return and last position
Limited Warranty	5 years

DETAILS

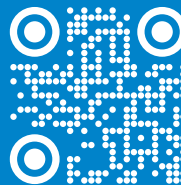
Category	Part Number	Description
Chair	6400	Forest 6400 Chair
Chair	6400C	Forest 6400 Chair, Designer Friendly
Chair	3625-962	Forest 6400 Upholstery, seamed, plush, with heat and massage
Delivery Unit	4486PI	Delivery System with Standard IC, Pivot
Delivery Unit	4486SI	Delivery System, Sidebox with Standard IC routing valve
Delivery Unit	4988PI	Delivery System with Euro, Pivot
Light	9078	LED Operator Light
Light	9073	LED Operator Light with 6 button modes
Light	1113-654	Light Post, Pivot
Light	1110-900	Light Post, Sidebox

DENTALEZ

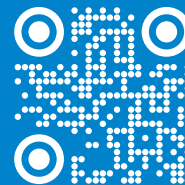
©2024 DENTALEZ, Inc. DENTALEZ is a registered trademark of DENTALEZ, Inc. Designer Friendly is a registered trademark. Inc. UltraLeather is a registered trademark of Ultrafabrics, Inc.



dhpsupply.com
800.626.2163



Contact a Sales Rep



Ordering Guide